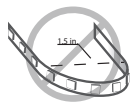
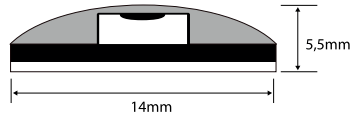


# XL marlin Lighting

## Strip Lights - Outdoor Lighting IP65 ( SL24V19.2IP65) Installation Instruction

The user: thank you for your purchase use this product, read this instruction manual before usage

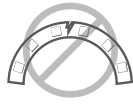
1. Model: SL24V19.2IP65
2. Rated Voltage: DC 24V
3. Rated Power: 19.2W
4. IP Grade: IP65
5. Roll Length: 5M
6. Max to connect: 1 Rolls
7. Cutting Distance: 2.4 cm



Do not bend LED strip light to a diameter less than 1.5 inches.



Do not fold or crease LED strip light.



Do not bend LED strip light on a horizontal plane.



Do not put excessive pressure on surface of strip light (e.g. glass/acrylic panes etc.).



Do not cover strip light with any materials.



Do not power strip light while attached to spool or tightly coiled.

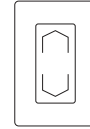
- Always disconnect the power supply before installing or performing any maintenance operations.
- Installation should be carried out by a suitably qualified person in accordance with good electrical practice and the appropriate national wiring regulations.
- These luminaires are widely used in commercial lighting, home decoration lighting, art gallery and museums.
- Only can be touched after 3 minutes later when power off, so as to avoid burns.
- Dismantling and refit are forbidden
- Installation on inflammables is forbidden.

If the external flexible cable or cord of this luminaire is damaged, it shall be exclusively replaced by the manufacturer or his service agent or a similar qualified person in order to avoid a hazard.

### 1. DETERMINE LOCATIONS TO INSTALL 3 MAIN COMPONENTS.



1) Driver

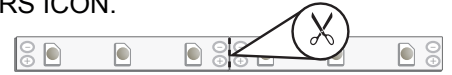


2) Control



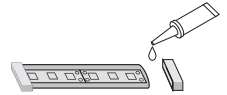
3) Fixture

### 2. CUT THE TAPE AT THE LINE INDICATED WITH THE SCISSORS ICON.

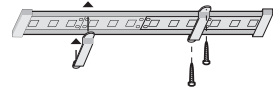


### 3. ATTACH STRIPLIGHT CONNECTOR

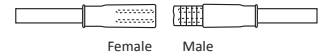
a: All cut points must be sealed with silicone adhesive (not included), and wet location end caps.



b: Mount with included mounting clips and screws. Silicone adhesive can also be utilized to mount tape to surfaces.

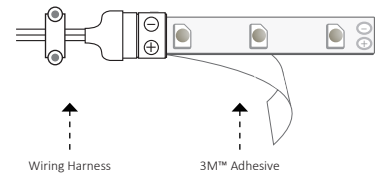


c: Utilize female and male wet location connectors to attach cut sections of wet location tape in series.

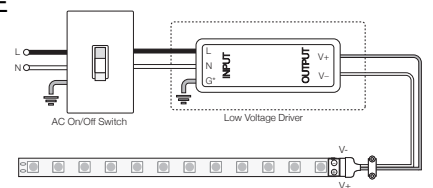


### 4. WHEN READY FOR MOUNTING, PEEL OFF THE 3M™ ADHESIVE BACKING OF THE TAPE AND TEAR OFF ALONG THE CONNECTOR TRAY EDGE.

**A** Determine a finished, smooth surface, away from direct sunlight for mounting. Clean surface and let dry.



### 5. USE THE FOLLOWING DIAGRAMS TO CONNECT TO THE POWER SOURCE



The light source of this luminaire is not replaceable; when the source reaches its end of life the whole luminaire shall be replaced

Welcome you again to buy our products