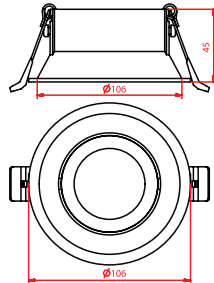


# XL marlin Lighting

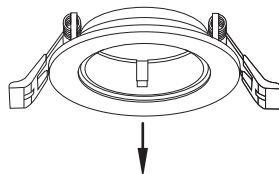
## MY Type Modular Trim ( GY106WH) Installation Instruction

The user: thank you for your purchase use this product, read this instruction manual before usage

### 1. Model: GY106WH



Trim →



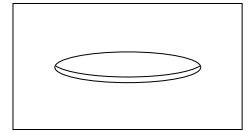
Trim Ring →



- Always disconnect the power supply before installing or performing any maintenance operations.
- Installation should be carried out by a suitably qualified person in accordance with good electrical practice and the appropriate national wiring regulations.
- These luminaires are widely used in commercial lighting, home decoration lighting, art gallery and museums.
- Only can be touched after 3 minutes later when power off, so as to avoid burns.
- Dismantling and refit are forbidden
- Installation on inflammables is forbidden.

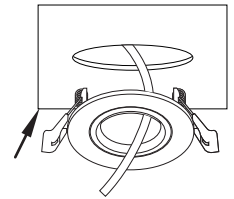
If the external flexible cable or cord of this luminaire is damaged, it shall be exclusively replaced by the manufacturer or his service agent or a similar qualified person in order to avoid a hazard.

1. Prepare The Ceiling  
Open a hole according to the dimension of the downlight trim that you choose to be used with the modular.

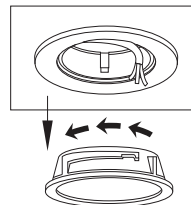


Ø85mm

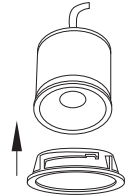
2. Push The Trim Into The Opening



3. Rotate Counterclockwise To release The Ring

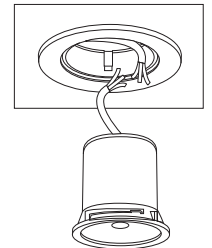


4. Push The Ring To The Lamp

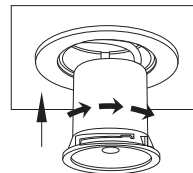


5. Connect The Cable Of The Driver .

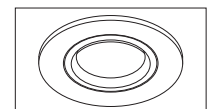
Live line for L terminal,  
Null line for N terminal,  
Ground line for E terminal.



6. Push The Fixture,  
Rotate Clockwise To Fix The Ring To Trim



7. Connect The Power Supply,  
Light Up The Lamp.



FOR SUITABLE TRIMS FOR THE MO/MX TYPE  
MODULAR SEE :  
XL MARLIN LIGHTING CATALOGUE