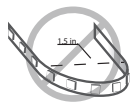
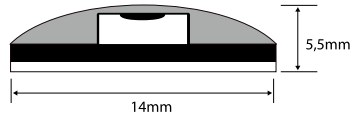


XL marlin Lighting

Strip Lights - Outdoor Lighting IP65 (SL24V7.7IP65) Installation Instruction

The user: thank you for your purchase use this product, read this instruction manual before usage

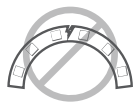
1. Model: SL24V7.7IP65
2. Rated Voltage: DC 24V
3. Rated Power: 7.7W
4. IP Grade: IP65
5. Roll Length: 5M
6. Max to connect: 3 Rolls
7. Cutting Distance: 6.3 cm



Do not bend LED strip light to a diameter less than 1.5 inches.



Do not fold or crease LED strip light.



Do not bend LED strip light on a horizontal plane.



Do not put excessive pressure on surface of strip light (e.g. glass/acrylic panes etc.).



Do not cover strip light with any materials.



Do not power strip light while attached to spool or tightly coiled.

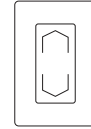
- Always disconnect the power supply before installing or performing any maintenance operations.
- Installation should be carried out by a suitably qualified person in accordance with good electrical practice and the appropriate national wiring regulations.
- These luminaires are widely used in commercial lighting, home decoration lighting, art gallery and museums.
- Only can be touched after 3 minutes later when power off, so as to avoid burns.
- Dismantling and refit are forbidden
- Installation on inflammables is forbidden.

If the external flexible cable or cord of this luminaire is damaged, it shall be exclusively replaced by the manufacturer or his service agent or a similar qualified person in order to avoid a hazard.

1. DETERMINE LOCATIONS TO INSTALL 3 MAIN COMPONENTS.



1) Driver

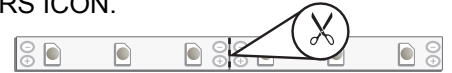


2) Control



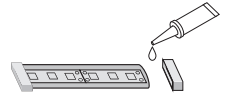
3) Fixture

2. CUT THE TAPE AT THE LINE INDICATED WITH THE SCISSORS ICON.

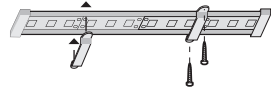


3. ATTACH STRIPLIGHT CONNECTOR

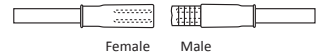
a: All cut points must be sealed with silicone adhesive (not included), and wet location end caps.



b: Mount with included mounting clips and screws. Silicone adhesive can also be utilized to mount tape to surfaces.

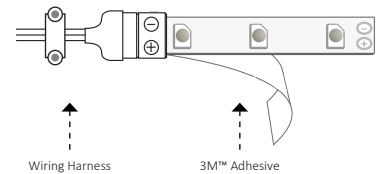


c: Utilize female and male wet location connectors to attach cut sections of wet location tape in series.

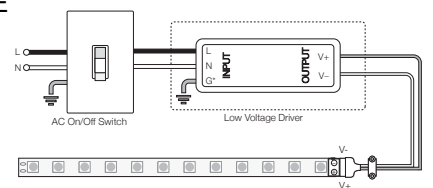


4. WHEN READY FOR MOUNTING, PEEL OFF THE 3M™ ADHESIVE BACKING OF THE TAPE AND TEAR OFF ALONG THE CONNECTOR TRAY EDGE.

A Determine a finished, smooth surface, away from direct sunlight for mounting. Clean surface and let dry.



5. USE THE FOLLOWING DIAGRAMS TO CONNECT TO THE POWER SOURCE



The light source of this luminaire is not replaceable; when the source reaches its end of life the whole luminaire shall be replaced

Welcome you again to buy our products