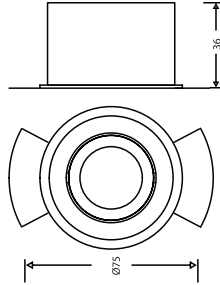


# XL marlin Lighting

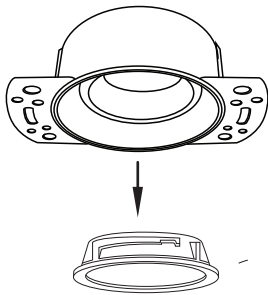
## MY Type Modular Trim ( WYR75WH ) Installation Instruction

The user: thank you for your purchase use this product, read this instruction manual before usage

### 1. Model: WYR75WH



Trim →

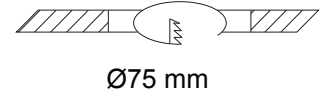


Trim Ring →

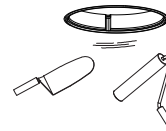
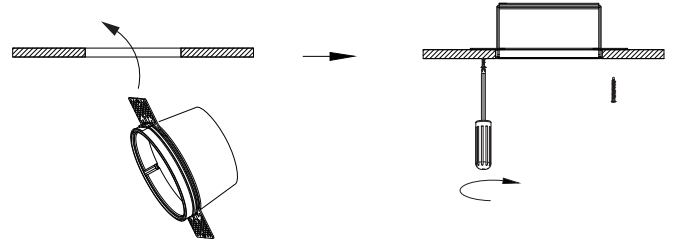
- Always disconnect the power supply before installing or performing any maintenance operations.
- Installation should be carried out by a suitably qualified person in accordance with good electrical practice and the appropriate national wiring regulations.
- These luminaires are widely used in commercial lighting, home decoration lighting, art gallery and museums.
- Only can be touched after 3 minutes later when power off, so as to avoid burns.
- Dismantling and refit are forbidden
- Installation on inflammables is forbidden.

If the external flexible cable or cord of this luminaire is damaged, it shall be exclusively replaced by the manufacturer or his service agent or a similar qualified person in order to avoid a hazard.

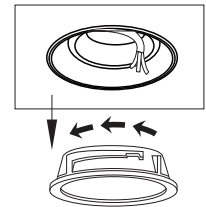
1. Prepare the ceiling  
open a hole according to  
the dimension cutout



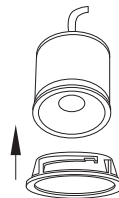
2. Insert built-in fitting into the ceiling and fix it with screws



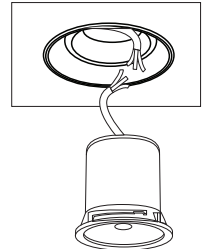
3. Plaster ceiling surround  
downlight Built-in fitting  
before mounting  
downlight into housing



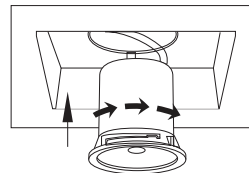
4. Rotate Counterclockwise  
To release The Ring



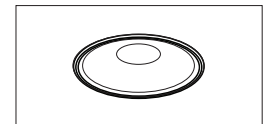
5. Push The Ring To  
The Lamp



6. Connect The Cable Of The Driver .



7. Push The Fixture,  
Rotate Clockwise To  
Fix The Ring To Trim



8. Connect The  
Power Supply,  
Light Up The Lamp.

FOR SUITABLE TRIMS FOR THE MO/MX TYPE  
MODULAR SEE :  
XL MARLIN LIGHTING CATALOGUE