

Model: XLCL210BL
Weatherproof-Round



General Data

Lamp Type	SMD2835
System Watts	10 W
Lumens	900 lm
Lamp Life	50000 hrs
CRI	>80 Ra
Beam Angle	120°
IP Rating	IP 65
Voltage	220-240V
CCT	3000/6500K
Oper. temp.	-20 to +40
Dimension	Ø210x75

Construction Data

IP rating	IP 65 Outdoor
Housing	PC housing
Protection finishing	/
Glass	PC cover
Loading capacity	/
Cable Gland	IP65
Gasket	Silicone rubber gasket

Electrical Data

Input voltage	220-240V
Cable	/

Accessories

Mounted Accessory	/
Clip	/

APPLICATIONS

Ideal for general lighting indoors or outdoors, commercial and residential applications.

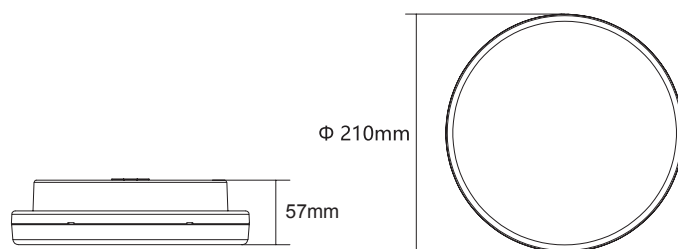
PRODUCT DESCRIPTION

Surface mounted or suspended mounted LED Weatherproof Injection for PC housing and PC cover, offering IP65 protection against moisture and dust.

FIXTURE CONSTRUCTION

PC housing and PC cover locked by screws, vandal proof.

Dimension Drawing

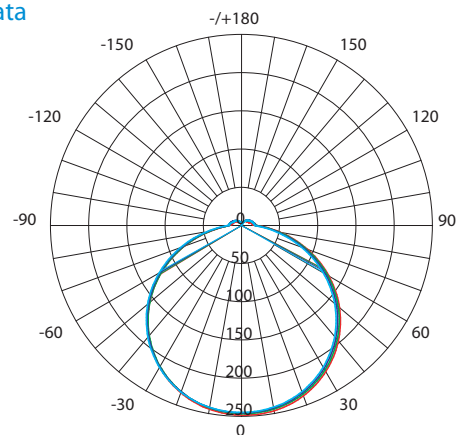


Lamp Options

Part Number	CCT
XLCL210BL3	3000 K
XLCL210BL65	6500 K

Light Distribution Curve [Unit: cd]

Photometric Data



Beam angle

Height (m)	Beam Diameter (cm)	Area (cm²)
1m	58.36, 248.31 x	346.52cm
2m	14.59, 62.071 x	693.04cm
3m	6.484, 27.591 x	1039.56cm
4m	3.647, 15.521 x	1386.08cm
5m	2.334, 9.9311 x	1732.59cm
6m	1.621, 6.8961 x	2079.11cm
7m	1.191, 5.0671 x	2425.63cm
8m	0.9118, 3.8791 x	2772.15cm
9m	0.7205, 3.0651 x	3118.67cm
10m	0.5836, 2.4831 x	3465.19cm