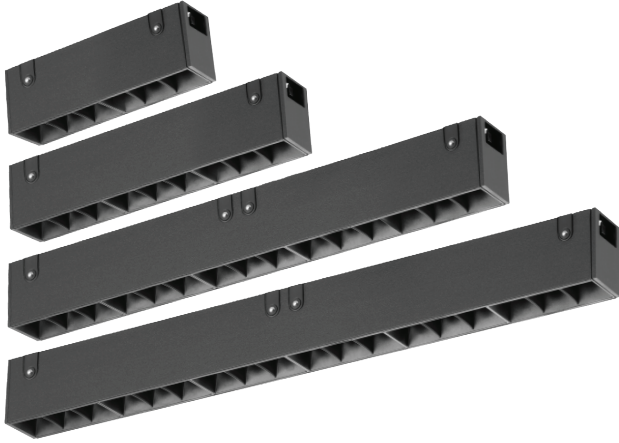


Model: XLMTFXB



General Data

| Model | XLMTFXB300 | XLMTFXB600 | XLMTFXB900 | XLMTFXB1200 |
|-------------------|-------------|------------|------------|-------------|
| System Watts | 10W | 20W | 30W | 40W |
| Beam angle | 30° / 60° | | | |
| Lamp Lumens | 75-80lm/w | | | |
| Dimensions mm | 304x22x33 | 604x22x33 | 898x22x33 | 1195x22x33 |
| Lamp Type | SMD | | | |
| CRI | ≥85 | | | |
| Lamp Life | 50000 hrs | | | |
| IP Rating | 20 | | | |
| Input voltage (V) | 48V-50/60Hz | | | |
| Body Color | White/black | | | |
| CCT | 3000K/4000K | | | |

APPLICATIONS

Ideal for application where comfort and nice atmosphere is required. Its widely applied to retail lighting and other high-end commercial areas.

PRODUCT DESCRIPTION

10W Magnetic Flood / Grille. Easy installation and removal from track. Optimal thermal dissipation. CCT, 3000K, 4000K, and multiple beam angles.

FIXTURE CONSTRUCTION

Made of die cast aluminum body and heat sink and aluminum reflector. The adaptor locks the Flood / Grille positively to the track, LED light source. comes in white, black.

XLMTFXB30 10W lamp options White

| Part Number | CCT | B. angle |
|-------------------|--------|----------|
| XLMTFXB300C3B30WH | 3000 K | 30° |
| XLMTFXB300C4B30WH | 4000 K | 30° |
| XLMTFXB300C3B60WH | 3000 K | 60° |
| XLMTFXB300C4B60WH | 4000 K | 60° |

XLMTFXB30 10W lamp options Black

| Part Number | CCT | B. angle |
|-------------------|--------|----------|
| XLMTFXB300C3B30BL | 3000 K | 30° |
| XLMTFXB300C4B30BL | 4000 K | 30° |
| XLMTFXB300C3B60BL | 3000 K | 60° |
| XLMTFXB300C4B60BL | 4000 K | 60° |

XLMTFXB600 20W lamp options White

| Part Number | CCT | B. angle |
|-------------------|--------|----------|
| XLMTFXB600C3B30WH | 3000 K | 30° |
| XLMTFXB600C4B30WH | 4000 K | 30° |
| XLMTFXB600C3B60WH | 3000 K | 60° |
| XLMTFXB600C4B60WH | 4000 K | 60° |

XLMTFXB600 20W lamp options Black

| Part Number | CCT | B. angle |
|-------------------|--------|----------|
| XLMTFXB600C3B30BL | 3000 K | 30° |
| XLMTFXB600C4B30BL | 4000 K | 30° |
| XLMTFXB600C3B60BL | 3000 K | 60° |
| XLMTFXB600C4B60BL | 4000 K | 60° |

XLMTFXB900 30W lamp options White

| Part Number | CCT | B. angle |
|-------------------|--------|----------|
| XLMTFXB900C3B30WH | 3000 K | 30° |
| XLMTFXB900C4B30WH | 4000 K | 30° |
| XLMTFXB900C3B60WH | 3000 K | 60° |
| XLMTFXB900C4B60WH | 4000 K | 60° |

XLMTFXB900 30W lamp options Black

| Part Number | CCT | B. angle |
|-------------------|--------|----------|
| XLMTFXB900C3B30BL | 3000 K | 30° |
| XLMTFXB900C4B30BL | 4000 K | 30° |
| XLMTFXB900C3B60BL | 3000 K | 60° |
| XLMTFXB900C4B60BL | 4000 K | 60° |

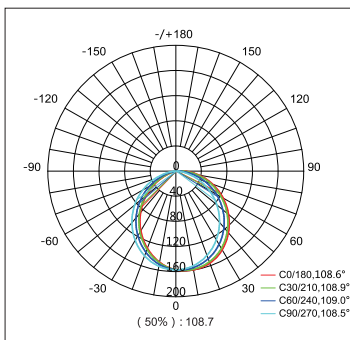
XLMTFXB1200 40W lamp options White

| Part Number | CCT | B. angle |
|--------------------|--------|----------|
| XLMTFXB1200C3B30WH | 3000 K | 30° |
| XLMTFXB1200C4B30WH | 4000 K | 30° |
| XLMTFXB1200C3B60WH | 3000 K | 60° |
| XLMTFXB1200C4B60WH | 4000 K | 60° |

XLMTFXB1200 40W lamp options Black

| Part Number | CCT | B. angle |
|--------------------|--------|----------|
| XLMTFXB1200C3B30BL | 3000 K | 30° |
| XLMTFXB1200C4B30BL | 4000 K | 30° |
| XLMTFXB1200C3B60BL | 3000 K | 60° |
| XLMTFXB1200C4B60BL | 4000 K | 60° |

Photometric Data



296.5 lm

| | | |
|-----|----------------|-----------|
| 1m | 53.60, 163.5lx | 264.21cm |
| 2m | 13.40, 40.87lx | 528.42cm |
| 3m | 5.96, 18.16lx | 792.63cm |
| 4m | 3.35, 10.22lx | 1056.84cm |
| 5m | 2.14, 6.53lx | 1321.05cm |
| 6m | 1.48, 4.54lx | 1585.26cm |
| 7m | 1.09, 3.33lx | 1849.47cm |
| 8m | 0.83, 2.55lx | 2113.68cm |
| 9m | 0.66, 2.01lx | 2377.89cm |
| 10m | 0.53, 1.63lx | 2642.10cm |

Eavg, Emax

Dimensions

