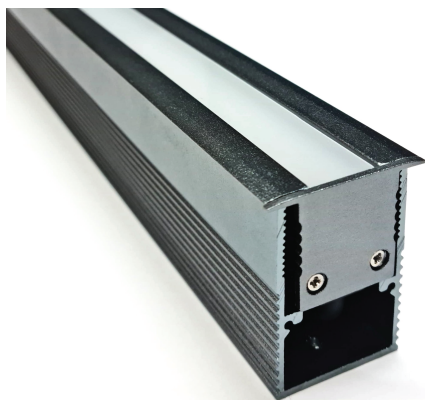


## Model: OLLC00812W



### General Data

|                |   |
|----------------|---|
| Power          | 12 W  |
| LED type       | 99 PCS 2835 SMD LED   |
| Luminous flux  | 500~560lm   |
| CCT            | 2700K/3000K/4000K/Re/Green/Blue Different CCT upon request. |
| CRI            | 80+   |
| Beam angle     | 120°  |
| Dimension      | 500 x 33.2 x 51mm   |
| Cut out dia.   | 500 x 33.2 x 51mm   |
| Weight (kgs)   | 0.860 kgs   |
| Lamp Life      | 50000 hrs   |
| SDCM           | ≤3  |
| Ambient Temp.  | -15~50°C  |
| RAL Color      | 80+   |
| Oper. Temp.    | -15~50°C  |
| Certifications | CE, RoHS  |

### Construction Data

|                      |  |
|----------------------|--|
| IP rating            | IP67 Waterproof  |
| IK rating            | IK08   |
| Housing              | Passivated(Anodizing) Aluminum                         |
| Protection finishing | 20~25µm thickness anodized film for housing. Dark grey |
| Trim                 | Passivated(Anodizing) Aluminum                         |
| Glass                | Without glass, but with strong PMMA diffuser           |
| Loading capacity     | 200 kgs  |
| Cable Gland          | Glue   |

### Electrical Data

|                  |   |
|------------------|---|
| Input voltage    | DC24V (With a separately driver as options)   |
| Insulation class | Class III   |
| Cable            | 2 x cable 15cm H05RN-F 2x0.75mm square with IP67 waterproof connector male +female. |
| Driver           | Low voltage constant current output, excluding the transformer                      |

### APPLICATIONS

These luminaires are widely used in exterior applications, such as lighting columns, walls, architectural features, as well as landscape features for hotels, gardens, parks, footpaths and staircase etc.

### PRODUCT DESCRIPTION

Inground, Wall and Ceiling recessed Light luminaire for outdoor installation, length 1000mm, anodized extruded aluminium body, PMMA diffuser, stainless steel clips for recess installation. Remote driver needed, Low power SMD2835 LED, IP67 rating.

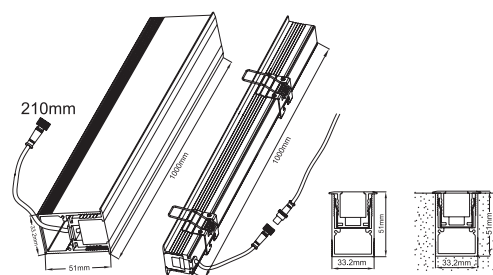
### FIXTURE CONSTRUCTION

20~25µm thickness anodized film for housing with trim, solid passivated (anodizing) Aluminium CNC machined trim, Without glass, but with strong PMMA diffuser, Low voltage output, excluding the transformer. 2 x cable 15cm H05RN-F 2x0.75mm square with IP67 waterproof connector male +female.

### Accessories

|                 |  |
|-----------------|--|
| Mounting sleeve | Passivated (Anodizing) Aluminum CNC machined. Dark grey. With 2 PCS clips for mounting sleeve, |
| Others          | 2 PCS springs for ceiling lights applications, and 2 PC end caps with screws                   |

### Dimension Drawing

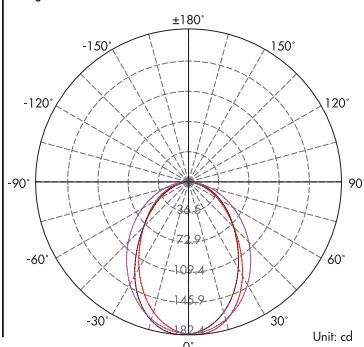


### Lamp Options Asymmetric

| Part Number      | CCT    | B.angle |
|------------------|--------|---------|
| OLLC00812WC3B120 | 3000 K | 120°    |
| OLLC00812WC4B120 | 4000 K | 120°    |
| OLLC00812WCRB120 | RED    | 120°    |
| OLLC00812WCGB120 | GREEN  | 120°    |
| OLLC00812WCBB120 | BLUE   | 120°    |

### Photometric Data(3000K, 120°)

Light Distribution Curve [Unit: cd]



Light distance Curve

