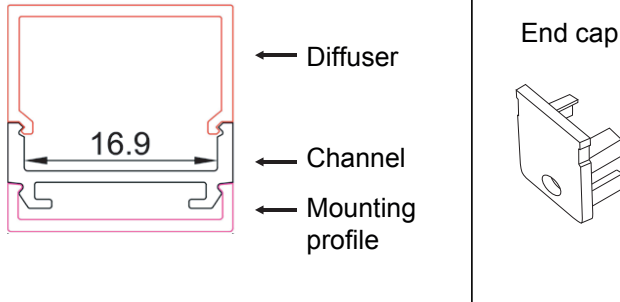
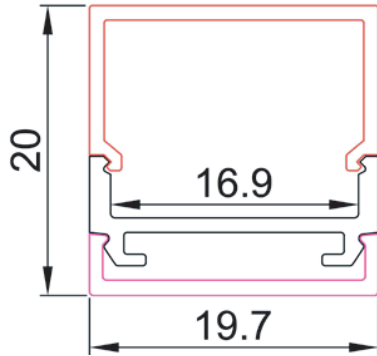


# XL marlin Lighting

## Strip Lights Surface Mounting Channel ( XLP011X ) Installation Instruction

The user: thank you for your purchase use this product, read this instruction manual before usage

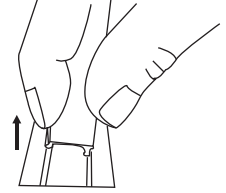
Model: XLP011X



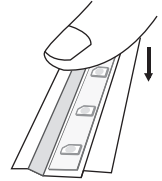
- Always disconnect the power supply before installing or performing any maintenance operations.
- Installation should be carried out by a suitably qualified person in accordance with good electrical practice and the appropriate national wiring regulations.
- These luminaires are widely used in commercial lighting, home decoration lighting, art gallery and museums.
- Only can be touched after 3 minutes later when power off, so as to avoid burns.
- Dismantling and refit are forbidden
- Installation on inflammables is forbidden.

If the external flexible cable or cord of this luminaire is damaged, it shall be exclusively replaced by the manufacturer or his service agent or a similar qualified person in order to avoid a hazard.

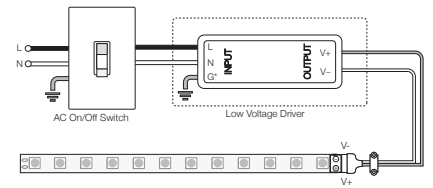
### 1. REMOVE THE DIFFUSER



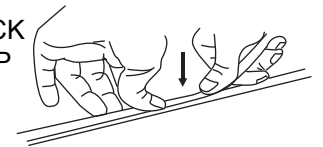
### 2. APPLYING THE STRIP LIGHT TO THE SURFACE.



### 3. CONNECT THE STRIP LIGHT TO ITS DRIVER THEN CONNECT THE DRIVER TO THE POWER SUPPLY



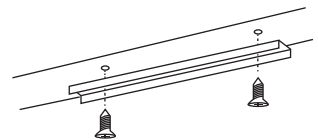
### 4. PRESS THE DIFFUSER BACK AND INSTALL THE END CAP



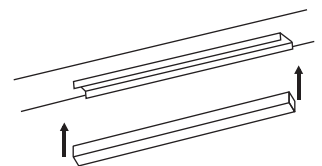
### 5. DRILL HOLES IN THE MOUNTING PROFILE



### 6. FIX THE METAL MOUNTING PROFILE



### 7. PRESS THE CHANNEL INTO THE MOUNTING PROFILE



### 8. CONNECT THE POWER SUPPLY, light up the lamp.

The light source of this luminaire is not replaceable; when the source reaches its end of life the whole luminaire shall be replaced

Welcome you again to buy our products